

Compatible devices:

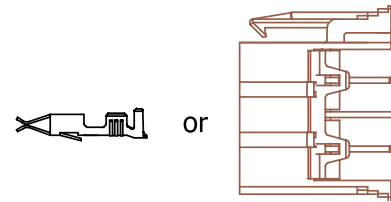
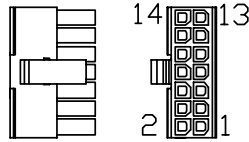
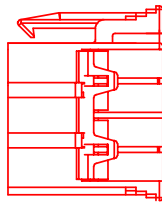
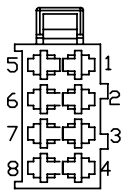
- FM-Tco4 HCV (and its modifications)

Make sure that you have:

- A vehicle with a supported digital tachograph
- A computer with Windows 7/8/10
- An internet connection (or a pre-downloaded configurator pack)
- A USB A to USB mini cable
- Basic tools (screwdriver, wrench, etc.)
- Cable ties (or double-sided tape)
- Wire connection tools



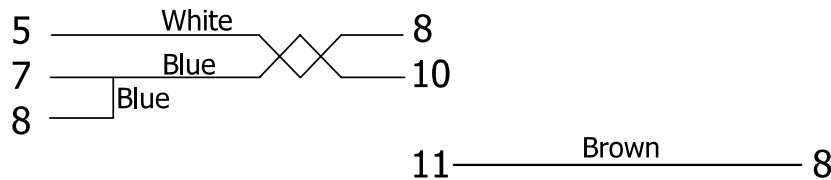
Wiring diagram



Tachograph connector C

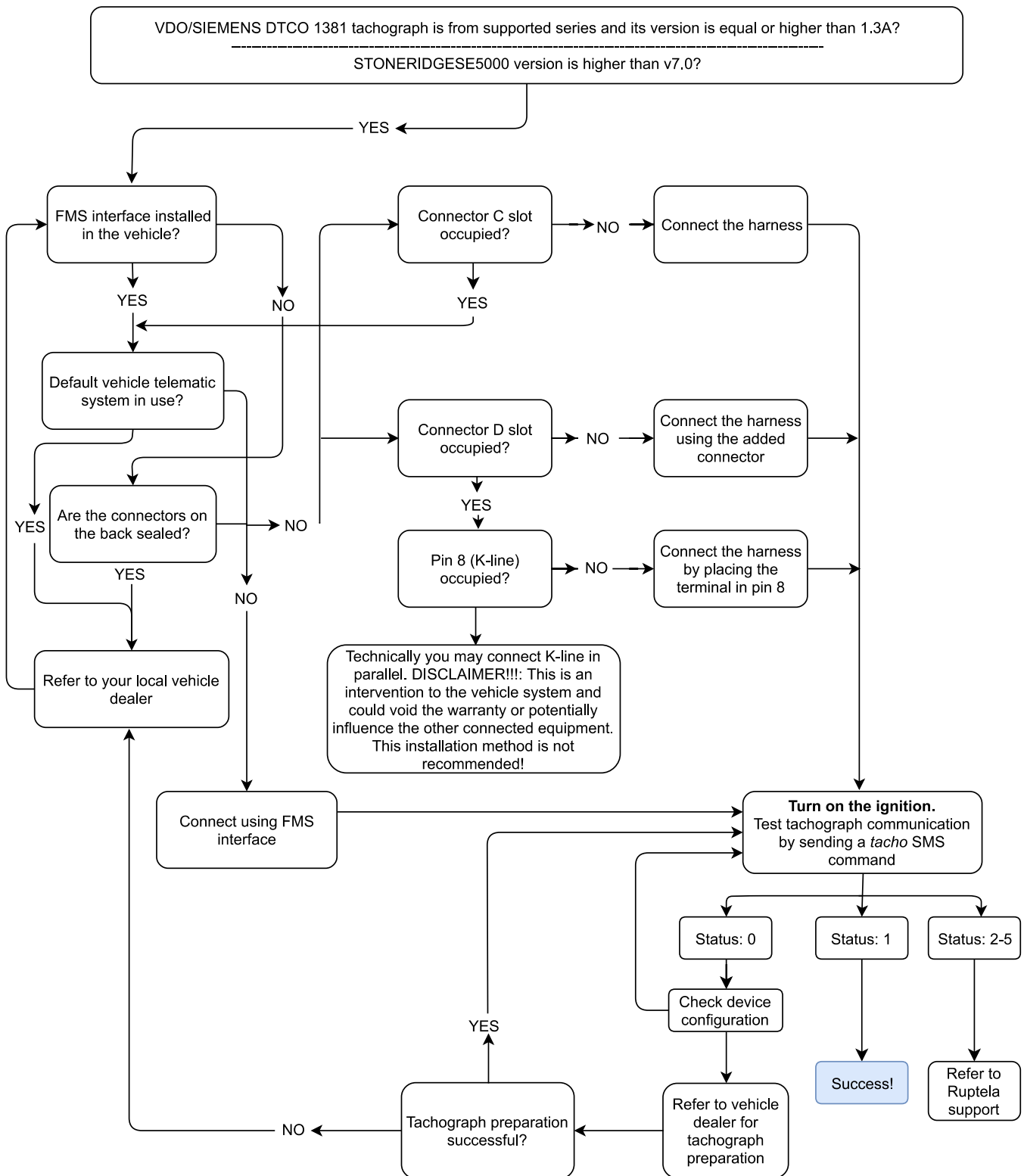
14 pin connector

Tachograph connector D



Workflow flowchart

Note: this flowchart is not applicable for ATOL tachographs.



Configuration steps

- 1 Insert your SIM card into the device.

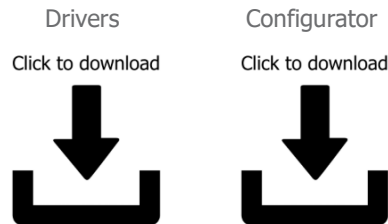


- 3 Connect the device to your computer using a USB cable. Start the configurator. Select the port you connected your device to. Click **Connect** in the configurator.

- 5 Configure GSM provider **APN** settings. Configure Fleet Management System **Connection** settings.

- 7 In **Interfaces**, tick **K-Line**. Select **TCO** in the drop-down list.

- 2 Download and install the latest [VCOM drivers](#). Download the device [configurator](#).



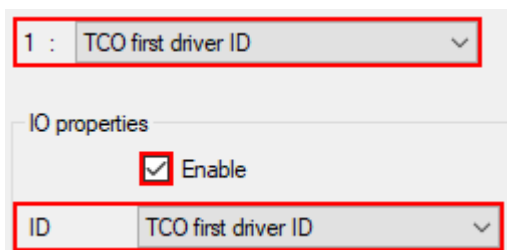
- 4 Download the [sample config file](#). Click **File** -> **Open CFG** to load the config file. Or use **New CFG wizard** to create a new config.

- 6 Click **Options** in **IO events**. In **Interfaces**, tick **CAN**. Select **Tacho read** in the drop-down list. Select the appropriate baud rate. Failure to select the correct baud rate can cause errors to appear on the dashboard.

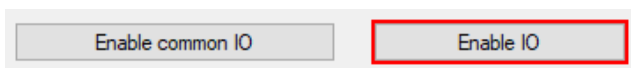
- 8 Enable the v1.1 protocol on the top right side of **IO settings**.

- 9 Select a parameter slot on the top left side of **IO settings**.

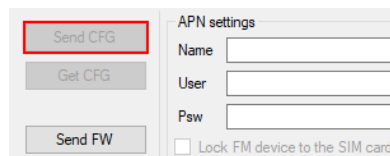
Select a parameter in **ID**.
Tick the **Enable** checkbox.
Repeat for all necessary parameters.



Alternatively, click the **Enable IO** button to enable a set of preselected parameters.



- 10 Click **Send CFG** to upload the config to the device.



Installation steps

- 1 Locate the tachograph.
Make sure that the ignition is off.
Check whether tachograph ports C and D are free.
If the ports are sealed, contact your dealer to unseal them.
- 2 Insert the red connector into tachograph port C.
If port D is already present, connect the brown cable to pin D8.
If there is no connector present in port D, insert the brown connector (packed in a separate plastic bag) into the port and connect the brown cable to pin D8.
Connect the 14 pin connector to the device.
- 3 Install the device with the GNSS antenna directed upwards.
Follow the recommendations:
 - Install behind the dashboard
 - Install as close to the window as possible
 - Avoid installing near metal surfaces
- 4 Fasten the device in the vehicle using zip-ties or double-sided tape.
Make sure it is secured tightly.
Turn on the ignition.
Send the *tacho* SMS command to check tachograph communication.
Check that the required data is received before finishing the installation, if not, ask your vehicle dealer to prepare the tachograph.

Further reading

- Documentation website: <https://doc.ruptela.lt/>
- Tacho harness datasheet: <https://doc.ruptela.lt/display/AB/Harnesses>
- Tachograph solution user manual: <https://doc.ruptela.lt/pages/viewpage.action?pageId=884778>
- Windows drivers: <https://doc.ruptela.lt/display/AB/FM4+drivers>
- Configurator tool: <https://doc.ruptela.lt/pages/viewpage.action?pageId=884805>

We highly recommend you to read the user manual before using the device.

Legal information

Copyright © 2018 Ruptela. All rights reserved. Reproduction, transfer, distribution or storage of parts or all of the contents in this document in any form without the prior written permission of Ruptela is prohibited. Other products and company names mentioned in this document are trademarks or trade names of their respective owners.