

CFG DIFF to SMS config tool

Introduction

CFG DIFF to SMS is a standalone software tool integrated into the FM configurator, which is designed to ease the currently complicated manual configuration over SMS. This tool allows using a DIFF configuration file to generate a SMS message of all configured parameters within the selected file, thus shortening the time and effort needed to manually generate a SMS message.

Feature description is valid for configurators from this version:

- FM4 Configurator - 00.02.49.XX

You can get the latest firmware and configurator versions from our documentation web site: doc.ruptela.it

Legal information

Copyright © 2017 Ruptela. All rights reserved. Reproduction, transfer, distribution or storage of parts or all of the contents in this document in any form without the prior written permission of Ruptela is prohibited. Other products and company names mentioned in this document are trademarks or trade names of their respective owners.

Document change log

Date	Version	Change details
2017-03-09	1.0	Initial draft

Description

CFG DIFF to SMS is integrated into the FM4 configurator. It uses a user created CFG DIFF file to generate a SMS message command, which the user can afterwards use to configure his device via SMS message.

Note

To configure a FM4 device via SMS, it is first required to enable configuration via SMS, which is described in the "[Device configuration via SMS](#)" file available at doc.ruptela.it

It is recommended to read the "[Device configuration via SMS](#)" file through at least once, since it explains how SMS configuration works in detail, limitations, how specific parameters are configured, possible responses from the FM device and other commands, which have to be kept in mind when using the automated tool.

Limitations

It is important to note that not all parameters can be changed via SMS. The list of non editable via SMS parameters are displayed below:

- Timetable;
- Configuration password;
- SMS password;
- Enable/Disable SMS configuration;
- Geozone points.

These parameters can be changed only by connecting a FM4 device to a configurator directly via computer.

Other note worthy special cases mostly concern the "CAN interface" configuration. All configurations for CAN interfaces are connected between each other. CAN1 and CAN2 cannot be configured separately, this includes all the sub group configurations such as LCV group selection, Baud rate, etc. (*For example: Previously the FM device was configured to CAN1 MobilEye, now the users decided to add an extra parameter and set CAN2 to LCV. If the user configures only the CAN2 parameter (CAN1 not enabled), saves the DIFF file and uses it to generate a SMS message, that message will overwrite the CAN1 parameter also, thus disabling CAN1. To properly configure CAN interfaces, full configuration must be entered for the CAN interfaces in the configurator prior to saving it to a DIFF file. This happens, because the SMS message configures CAN1 and CAN2 with a single number in decimal format, which means that both interfaces are configured at the same time. This is described in the "[Device configuration via SMS](#)" file).*

Other exceptional cases:

- Send data without GPS fix;
- Custom ignition;
- GSM jamming configuration;

All cases are described in the "[Device configuration via SMS](#)" file.

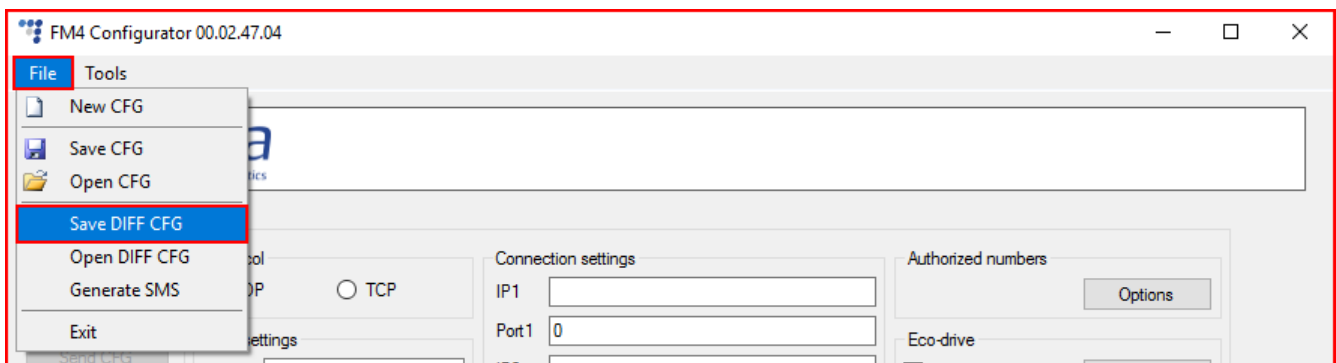
Configuration

Before generating a SMS, a configuration file must be created. To do this, the user must select and configure the parameters he wishes to enable. Configuration description of each parameter for every device can be found at doc.ruptela.it. When creating a configuration file it is important to keep in mind the limitations and exceptional cases mentioned earlier.

Attention

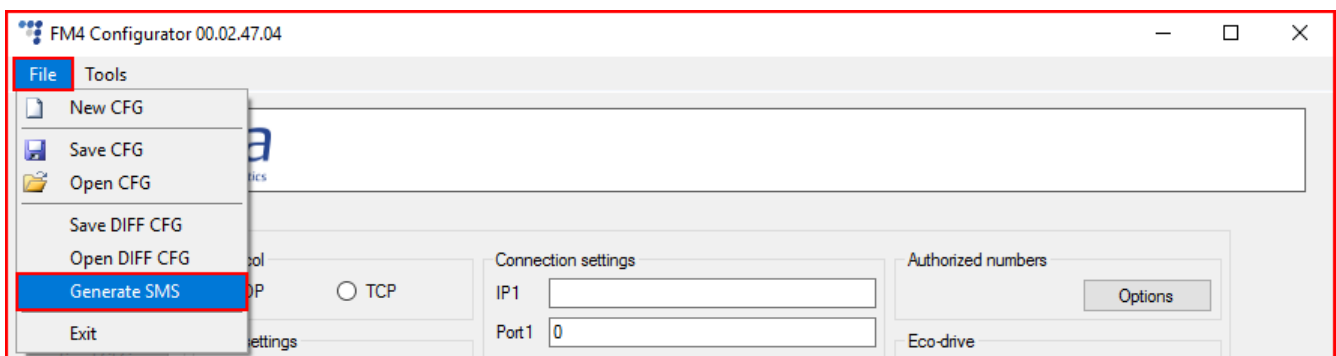
A DIFF file will save all made changes to a configuration. For example changing a number in the IP filed, or marking a checkbox, but, if a change was made, and afterwards reverted to the previous state (checkbox checked, and unchecked afterwards), this will not be marked as a "change made". DIFF will only record changes made to the initial configuration (a loaded pre-set configuration is considered an initial configuration). Particular attention must be taken, when creating a DIFF file, to avoid accidental changes to the configuration.

When creating a configuration file it is not required to create a full configuration, only parameters that the user wants to change or enable should be modified. If the user wants to disable some of the previous parameters, it is best to load the previous configuration file and make changes to it, because otherwise the software will not see the changes. After creating the desired configuration, the user can go straight to the SMS generation, or save the DIFF file.

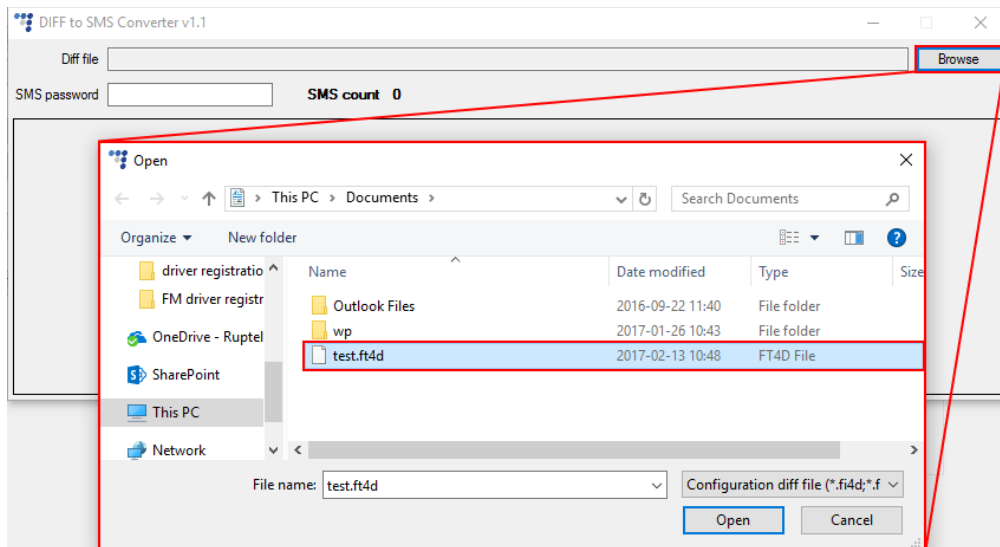


Generate SMS

After making all the necessary changes to the configuration, the user must open the "DIFF to SMS converter" tool by clicking **File>Generate SMS**.



This will open the "DIFF to SMS converter" tool. The tool will automatically load the currently open configuration (even if it is not saved). If the user wants to load a different DIFF file, he must select the previously saved DIFF file by clicking **browse** and navigating to the saved DIFF file.

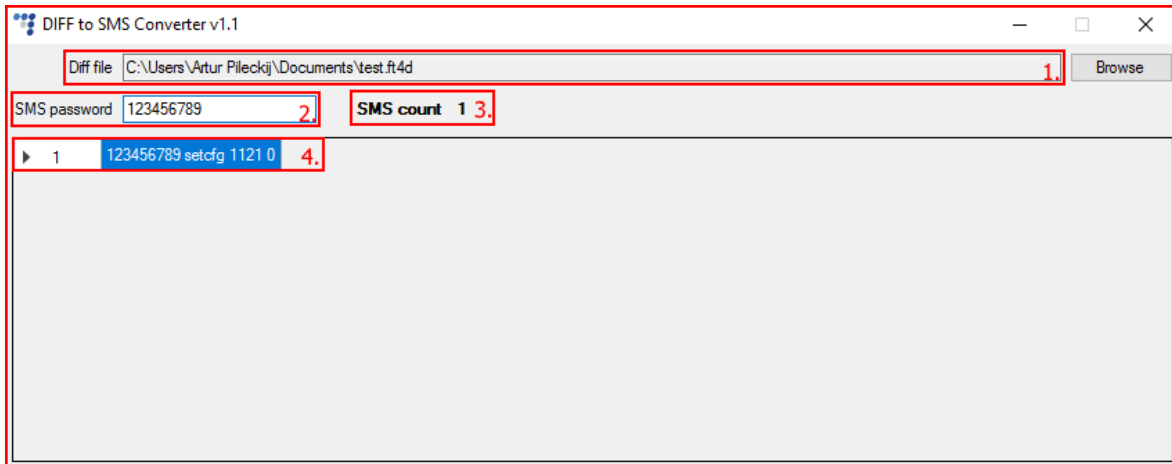


Note

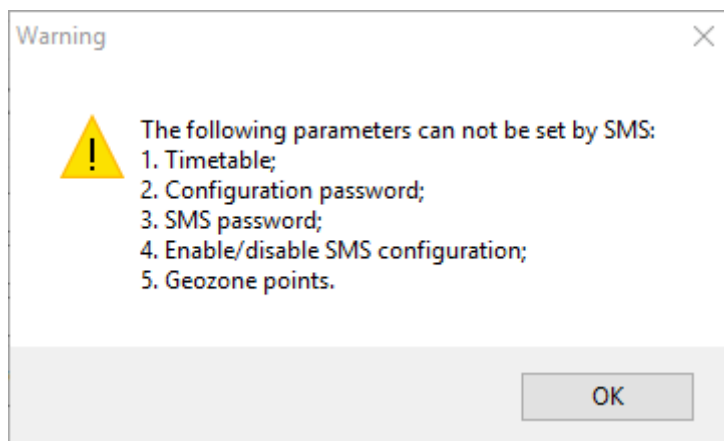
The file extension displayed in the previous picture will differ depending on the selected device for which the configuration is made.

After selecting the DIFF file (or opening the tool after creating a configuration without saving):

1. Name and location of the DIFF file will be displayed in the field above;
2. If the password was entered during the first configuration, it must be entered in this field now, otherwise the commands in the SMS message will not be accepted;
3. SMS count displays the amount of messages in which all the commands are separated. This is used because the device can acknowledge only **one message at a time** with a maximum character length of **160 symbols**;
4. The highlighted text represents the SMS message that needs to be sent to the FM device to configure the parameters saved in the DIFF file. The number to left of the highlighted text represents the number of the SMS message.



If any of the five unchangeable via SMS parameters described in the “Limitations” section was included in the DIFF file, a warning window will appear after selecting the DIFF file.



Possible response from the FM device after receiving the SMS command, are described in the “[Device configuration via SMS](#)” file.