

Identification String

1 Introduction

1.1 About the Functionality

The identification string functionality allows the tracking device to begin the data transfer by sending an identification packet to the server and receiving an acknowledgment packet.

Detailed descriptions of tracking devices and functionalities can be found on our documentation website: doc.ruptela.lt

1.2 Legal Information

Copyright © 2020 Ruptela. All rights reserved. Reproduction, transfer, distribution or storage of parts or all of the contents in this document in any form without the prior written permission of Ruptela is prohibited. Other products and company names mentioned in this document are trademarks or trade names of their respective owners.

1.3 Compatibility

This functionality is compatible with the following devices with the newest firmware version:

- HCV5
- LCV5
- Pro5
- Trace5
- FM-Tco4 HCV
- FM-Tco4 LCV
- FM-Pro4
- FM-Eco4
- FM-Eco4 S/T
- FM-Plug4

1.4 Contact Information

General enquiries

Website: ruptela.com

E-mail: info@ruptela.com

Phone: +370 5 2045188

Technical support

E-mail: support@ruptela.com

Phone: +370 5 2045030

1.5 Document Changelog

Version	Date	Modification
1.0	2020-07-16	Initial issue

1.6 Notations

The following notations are used in this document to highlight important information:

Bold text

Used to indicate user interface elements or for emphasis.

Italic text

Used to indicate items that belong to a list and can be selected, also for identification of examples.

Note



Used to highlight important information or special conditions.

Tip




Suggestions on how to proceed.

Caution



Used to mark actions that require caution when handling the product.

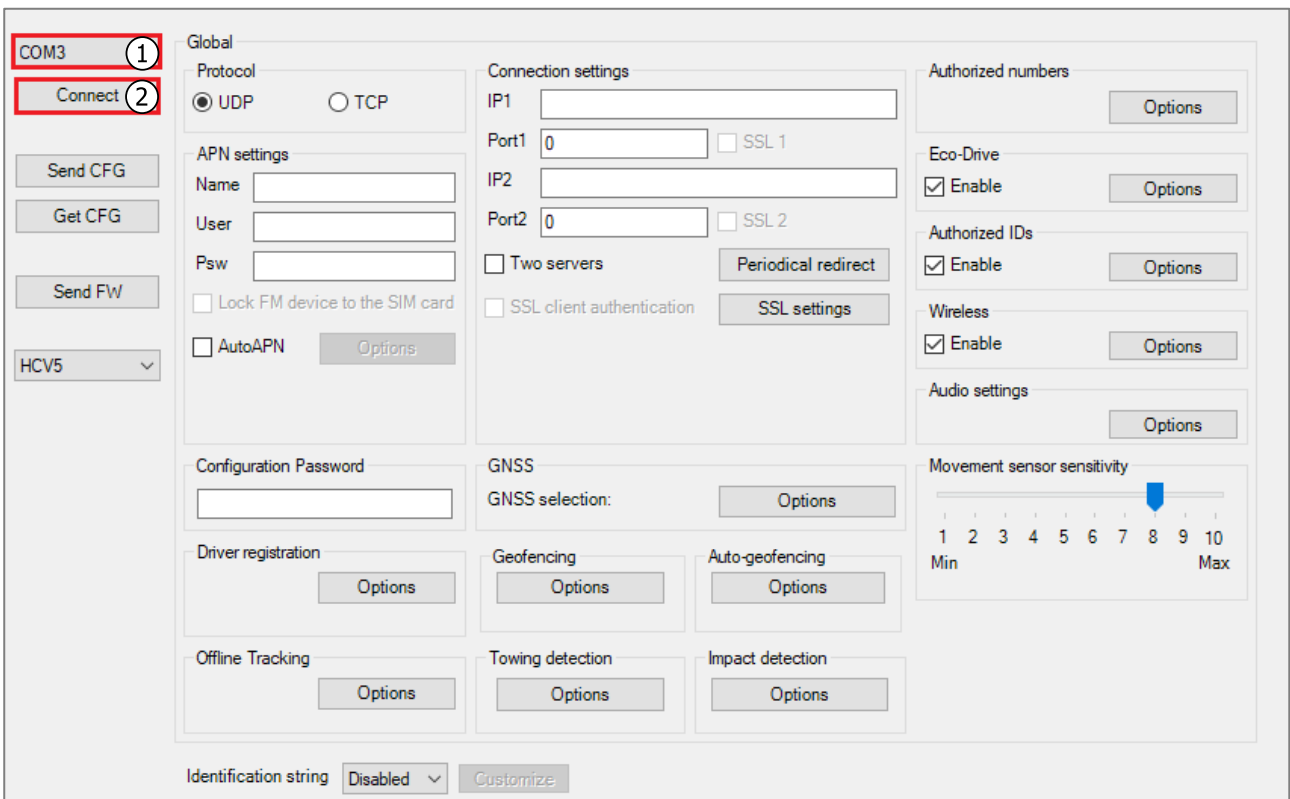
2 Configuration

 These functionalities require the use of the advanced configurator.

2.1 Starting the Configuration

To start the configuration, follow these steps:

1. Open the advanced configurator. Select the COM port to which your device is connected.
2. Click **Connect**.



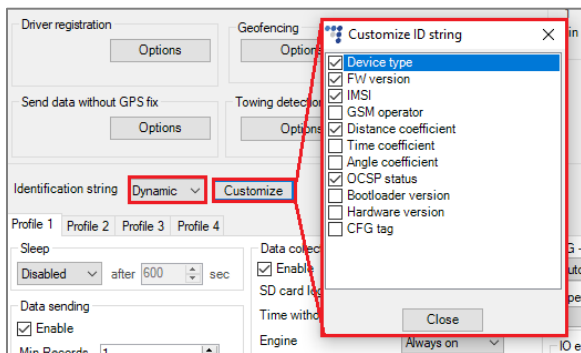
The screenshot displays the advanced configurator interface. On the left sidebar, the 'COM3' dropdown menu is highlighted with a red box and a circled '1', and the 'Connect' button is highlighted with a red box and a circled '2'. The main interface is divided into several sections: 'Global' (Protocol: UDP selected, TCP unselected), 'APN settings' (Name, User, Psw, Lock FM device to the SIM card, AutoAPN), 'Connection settings' (IP1, Port1, IP2, Port2, Two servers, SSL client authentication, Periodical redirect, SSL settings), 'Authorized numbers', 'Eco-Drive' (Enable checked), 'Authorized IDs' (Enable checked), 'Wireless' (Enable checked), 'Audio settings', 'Movement sensor sensitivity' (slider set to 8), 'GNSS selection', 'Geofencing', 'Auto-geofencing', 'Offline Tracking', 'Towing detection', 'Impact detection', and 'Identification string' (Disabled selected, Customize button).

2.2 Identification String

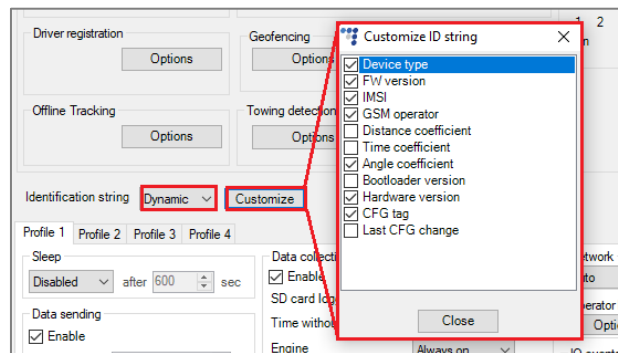
After enabling the identification string, the device will send an identification packet to the server, wait for an acknowledgment packet and then transfer the data.

The following options for **Identification string** are available:

- *Disabled*. The identification packet will not be sent. This option is selected by default.
- *Static*. The identification packet will contain the following information: device type, firmware version, IMSI code, GSM operator code, distance, time and angle coefficients.
- *Dynamic*. You can select what information will be contained in the identification packet by clicking **Customize**.



4th gen devices selection



5th gen devices selection



The *Static* option is not available for HCV5, LCV5, Pro5 and Trace5 devices.



The *Dynamic* option is not available for FM-Eco4, FM-Eco4 S, FM-Eco4 T, Plug4 devices.



More information is available in the Ruptela device protocol description. Please contact our technical support for more details.

2.3 Finishing the Configuration

To finish the configuration, close the **Customize ID string** window. Click **Send CFG** to send the configuration to the device.

The screenshot displays the Ruptela Configurator software interface. At the top, there is a menu bar with 'File' and 'Tools'. Below it, a 'Configuration file information' section shows: Configuration source: **Configurator**, Target device: n/a, FM device FW version: n/a, CFG Tag: [text input], Advanced Configurator version: n/a, and Last edited: n/a. The Ruptela logo is in the top right corner.

The main interface is divided into several sections:

- Global:** Includes a dropdown menu for 'COM3', a 'Disconnect' button, a 'Send CFG' button (highlighted with a red box), a 'Get CFG' button, a 'Send FW' button, and a dropdown menu for 'HCV5'.
- Protocol:** Radio buttons for 'UDP' (selected) and 'TCP'.
- APN settings:** Fields for 'Name', 'User', and 'Psw'. Checkboxes for 'Lock FM device to the SIM card' and 'AutoAPN' with an 'Options' button.
- Connection settings:** Fields for 'IP1', 'Port1' (0), 'IP2', and 'Port2' (0). Checkboxes for 'SSL 1', 'SSL 2', 'Two servers', and 'SSL client authentication'. Buttons for 'Periodical redirect' and 'SSL settings'.
- Authorized numbers:** An 'Options' button.
- Eco-Drive:** A checked 'Enable' checkbox with an 'Options' button.
- Authorized IDs:** A checked 'Enable' checkbox with an 'Options' button.
- Wireless:** A checked 'Enable' checkbox with an 'Options' button.
- Audio settings:** An 'Options' button.