

# Sleep timer

## Introduction

The sleep function is compatible with the following generation devices:

- HCV5
- LCV5
- Pro5
- Trace 5
- Eco4/4+
- Eco4 light / Eco4 light +
- FM-Eco4 RS T
- FM-Eco4 S
- FM-Eco4 T
- Pro4
- Tco4 HCV
- Tco4 LCV
- Plug4/4+

You can get the latest firmware and configurator from our documentation website: [doc.ruptela.it](http://doc.ruptela.it)

You can find the relation between firmware and the recommended configurator in the changelog of each device.

## Legal notice

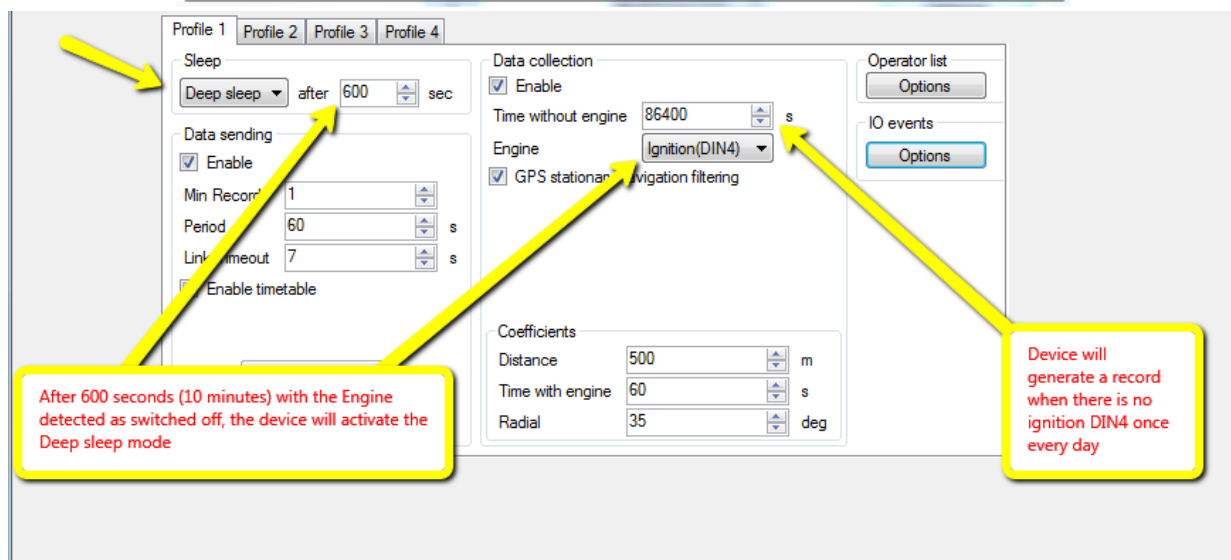
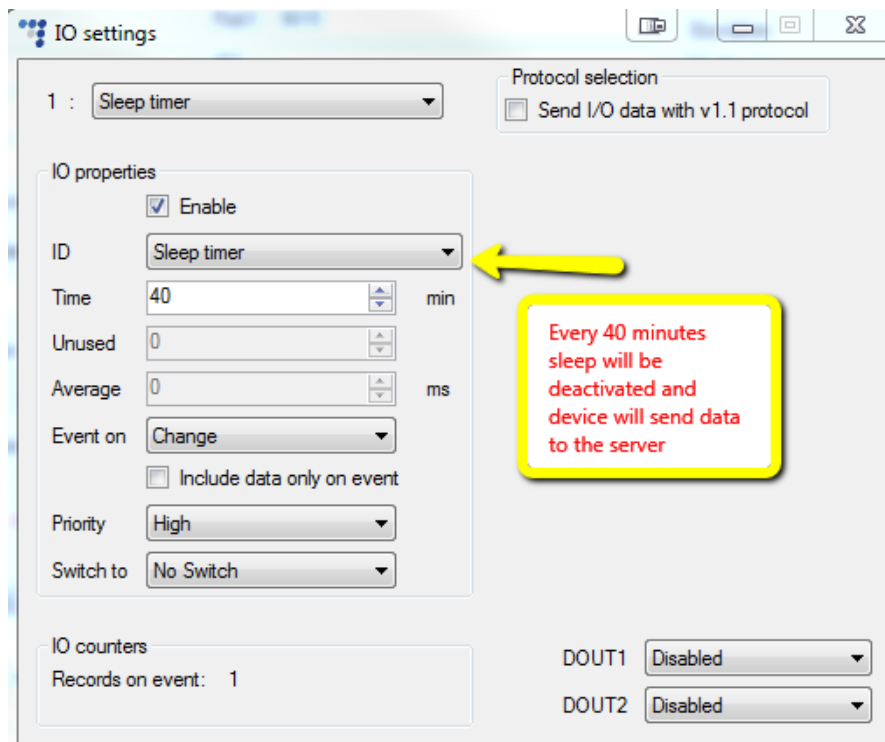
Copyright © 2020 Ruptela. All rights reserved. Reproduction, transfer, distribution or storage of parts or all of the contents in this document in any form without the prior written permission of Ruptela is prohibited. Other products and company names mentioned in this document are trademarks or trade names of their respective owners.

## Document change log

Date	Version	Change details
2016-10-13	v1.0	Initial draft.
2020-04-03	v1.1	Compatible devices list is updated.
2020-10-23	v1.2	Updated: Compatible devices list.

## Configuration

Protocol 1.1 is not required. With protocol 1.0 you can use this functionality and edit its parameters.



Once the device starts Sleep mode, it will start counting the time for the Sleep timer parameter, and when it will reach it, it will deactivate the Sleep mode and switch on the GPS and GSM modems to send data to the server.

If the device wakes up before the time is reached, and afterwards returned back to sleep mode, the counting of the parameter will start over from 0.

The parameter ID is 174. Sleep timer, 1 Byte, with values of 0 (inactive) or 1 (active because the configured time was reached).